

Bridgewater Campus  
Driving Directions

For GPS navigation, use: 1041 US Highway 202/206, Bridgewater, NJ 08807 address. The site mailing address is 1005 Rte 202/206, Bridgewater, NJ 08807, but sometimes GPS will direct about 1 mile up the road.

Note: Visitors must enter the campus via the main guard house which is located on the south end of the campus (500 feet south of the traffic light at the Muirfield Lane entrance, or 500 feet north of Heather Hill Way / Mountain View Ave.)

---

**Directions to** Bridgewater campus...

**From Newark Airport** (3 Brewster Road, Newark, NJ 07114):  
(34 miles/33 minutes without traffic)

- From the airport terminal, follow signs for INTERSTATE 78 W/GARDEN STATE PARKWAY/CLINTON
- Merge onto I-78 W (25.6 miles)
- Take EXIT 29 for I-287 toward US-202/US-206/MORRISTOWN/SOMERVILLE (0.5 miles)
- Keep RIGHT and follow signs for INTERSTATE 287 N/US 202 N/US 206 N/MORRISTOWN and merge onto I-287 N (0.6 miles)
- Take EXIT 22A to merge onto US-202 S/US-206 S toward PLUCKEMIN (0.2 miles)
- Merge onto US-202 S/US-206 S and proceed south past the village of PLUCKEMIN (2.1 miles)
- The Bridgewater campus is on your right

**From Points East** (from I-78 West, such as from New York, NY):

- Take I-78 W to EXIT 29
- Take EXIT 29 for I-287 toward US-202/US-206/MORRISTOWN/SOMERVILLE (0.5 miles)
- Keep RIGHT and follow signs for INTERSTATE 287 N/US 202 N/US 206 N/MORRISTOWN and merge onto I-287 N (0.6 miles)
- Take EXIT 22A to merge onto US-202 S/US-206 S toward PLUCKEMIN (0.2 miles)
- Merge onto US-202 S/US-206 S and proceed south past the village of PLUCKEMIN (2.1 miles)
- The Bridgewater campus is on your right

**From Points West** (from I-78 East, such as from Allentown, PA):

- Take I-78 E to EXIT 29 toward US-202/US-206/I-80/MORRISTOWN/SOMERVILLE (0.5 miles)
- Keep LEFT and merge onto I-287 N (1.0 miles)
- Take EXIT 22A to merge onto US-202 S/US-206 S toward PLUCKEMIN (0.2 miles)
- Merge onto US-202 S/US-206 S and proceed south past the village of PLUCKEMIN (2.1 miles)
- The Bridgewater campus is on your right

**From Points North** (from I-287 South, such as from Morristown, NJ):

- Take I-287 S to EXIT 22 to merge onto US-202 N/US-206 N toward BEDMINSTER/PLUCKEMIN (0.3 miles)
- Merge onto US-202 N/US-206 N
- Stay in RIGHT lane and exit onto RIVER RD (jug handle for 202/206 South) (0.1 miles)
- Turn LEFT at the first cross street (traffic light) onto US-202 S/US-206 S
- Follow US-202 S/US-206 S and proceed past the village of PLUCKEMIN (2.8 miles)
- The Bridgewater campus is on your right

**From Points South** (from I-287 North, such as from Edison, NJ):

- Take I-287 N to EXIT 22A to merge onto US-202 S/US-206 S toward PLUCKEMIN (0.2 miles)
- Merge onto US-202 S/US-206 S and proceed south past the village of PLUCKEMIN (2.1 miles)
- The Bridgewater campus is on your right

**From Points Southwest** (from US-202 North, such as from Branchburg, NJ):

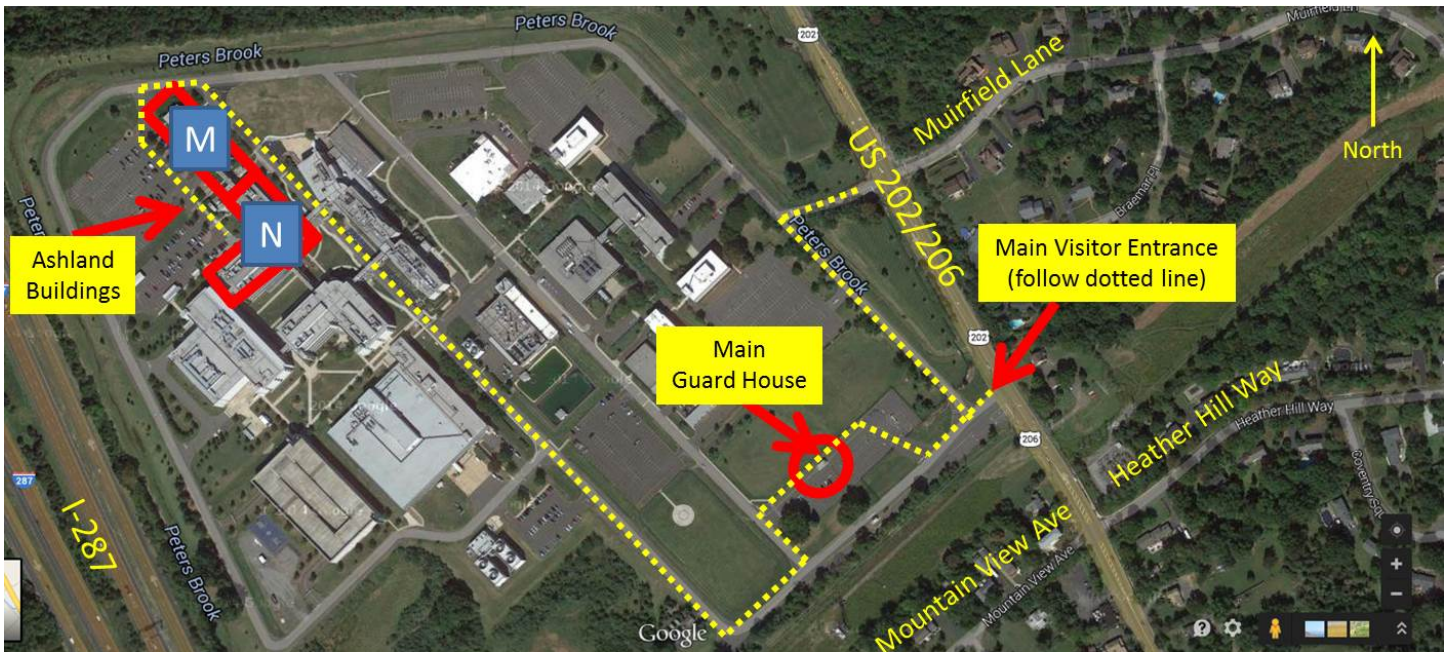
- Take US-202 N until it merges with US-202 N/US-206 N
- Continue to follow US-202 N/US-206 N past the Bridgewater Commons Mall
- Veer to the right just past the I-287 overpass and continue on US-202 N/US-206 N toward PLUCKEMIN (3.6 miles)
- The Bridgewater campus is on your left; use the south entrance and follow visitor signs to the main guard house

**Directions from** Bridgewater campus...

To Newark Airport (3 Brewster Road, Newark, NJ 07114):  
(31 miles/30 minutes without traffic)

- Turn LEFT out of the Bridgewater campus and head NORTH on US-202 N/US-206 N (2.7 miles)
- Stay in RIGHT lane and exit RIGHT onto RIVER RD (jug handle for 202/206 South) (0.1 miles)
- Turn LEFT at first cross street (traffic light) onto US-202 S/US-206 S (0.3 miles)
- Take Interstate 287 S ramp to Interstate 78 (0.3 miles)
- Merge onto I-287 S (0.8 miles)
- Take EXIT 21A to merge onto I-78 E toward NEW YORK CITY (17.9 miles)
- Keep right at fork to stay on I-78 E and follow signs for NEWARK (8.5 miles)
- Take EXIT 57 for New Jersey 21 N toward NEWARK/NEWARK AIRPORT (0.3 miles)
- Keep LEFT, follow signs for MAIN TERMINALS/NORTH AREA/SOUTH AREA (0.4 miles)

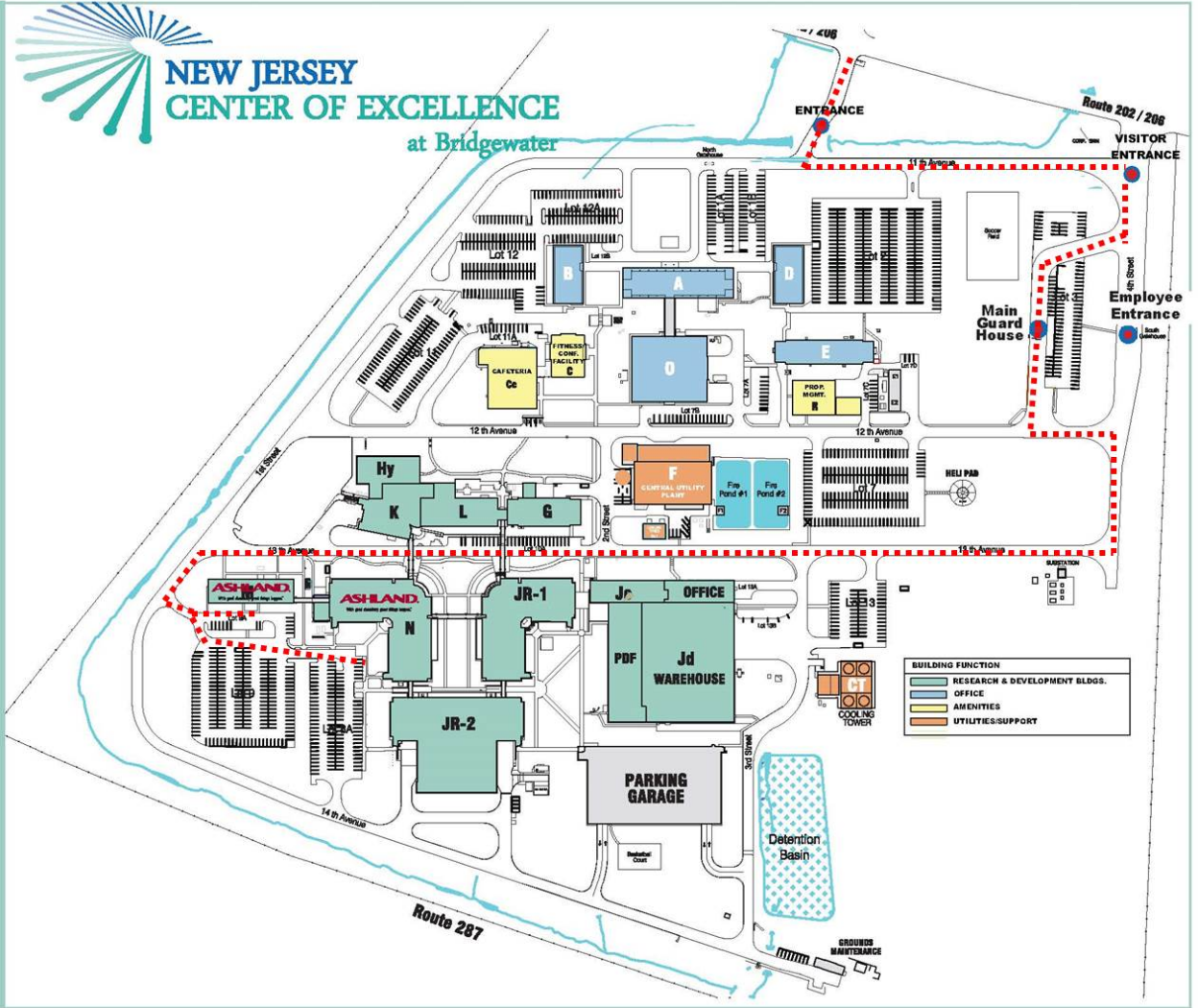
Visitor parking is available in marked spots located in parking lots 9A or 8A in front of Buildings M and N.



# BUILDINGS M & N



## NEW JERSEY CENTER OF EXCELLENCE at Bridgewater



BUILDING FUNCTION	
<span style="color: green;">■</span>	RESEARCH & DEVELOPMENT BLDGS.
<span style="color: lightblue;">■</span>	OFFICE
<span style="color: yellow;">■</span>	AMENITIES
<span style="color: orange;">■</span>	UTILITIES-SUPPORT